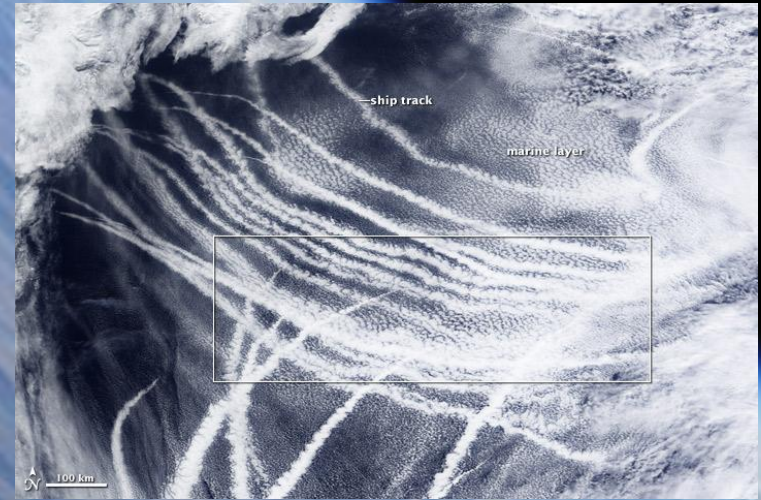


# Aerosols and climate: the big climate impact of small particles

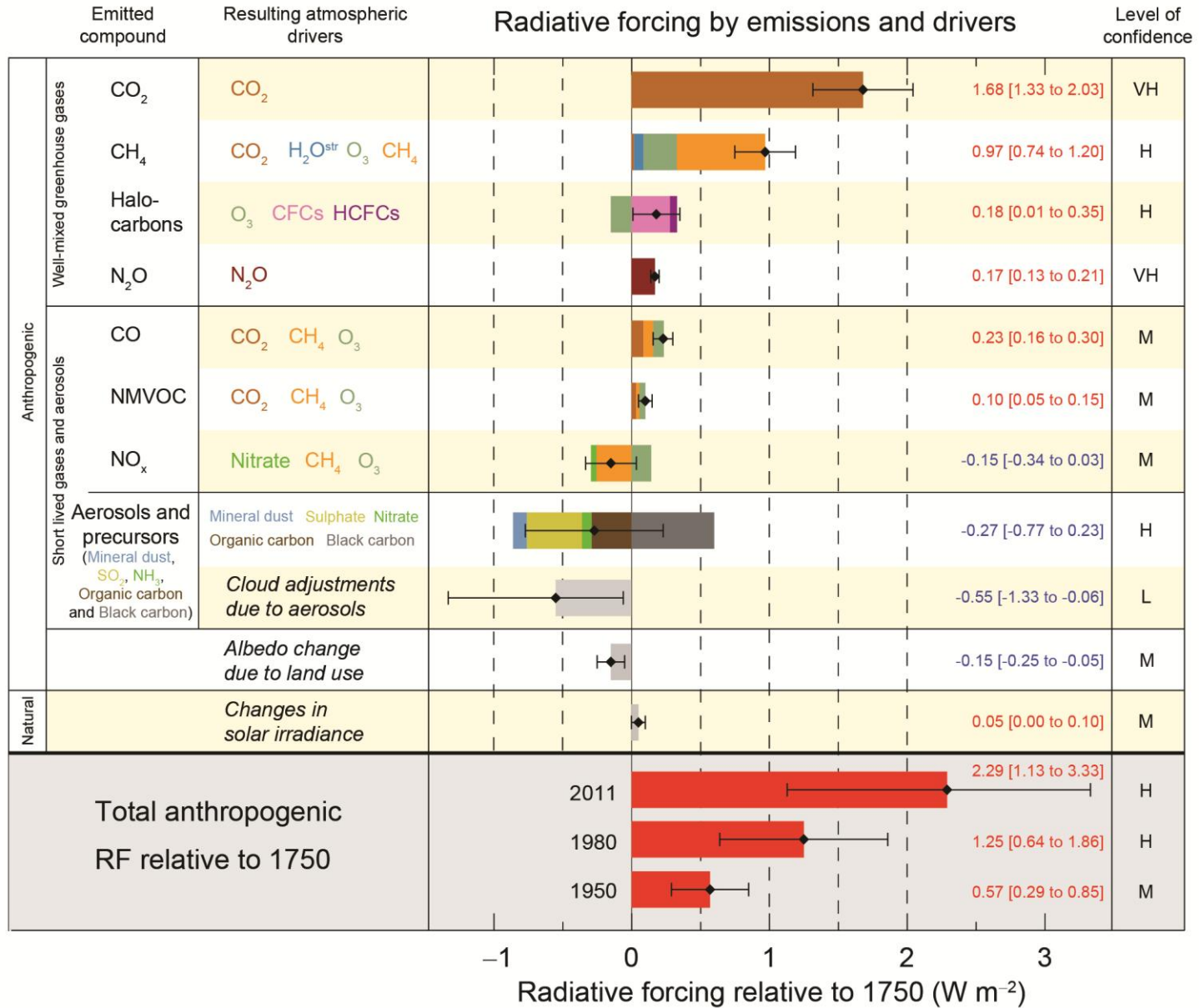


**Patrick L. Hayes**  
Department of Chemistry,  
Université de Montréal,  
Montreal, QC, CANADA  
CSI – July 19, 2016

# Outline

- Introduction to aerosol – climate interactions
- Direct forcing & aerosol optical properties
- Cloud droplet nucleation
  - Aerosol size measurements & arctic observations

# Global Average Climate Forcing Estimates





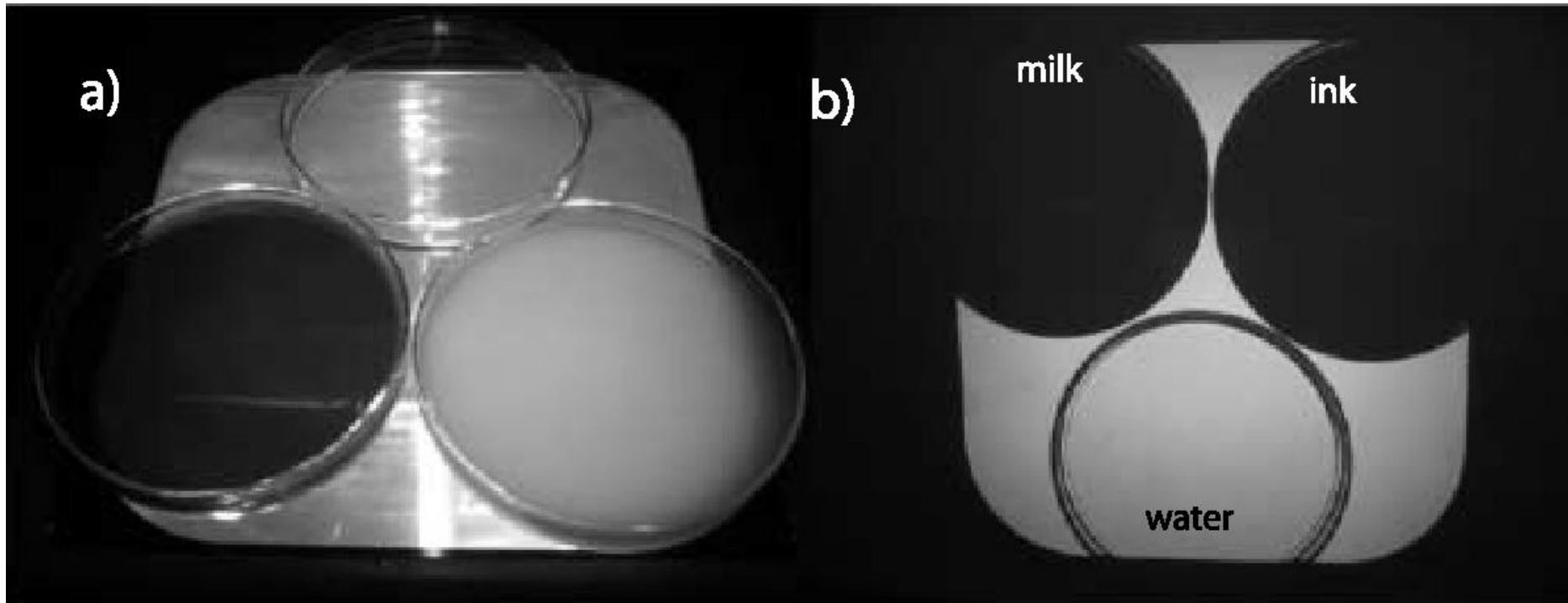
Mount Ruapehu, New Zealand (Photograph ©2007 New Zealand GeoNet)

*Precipitation &  
Water Cycles*

# Extinction of radiation

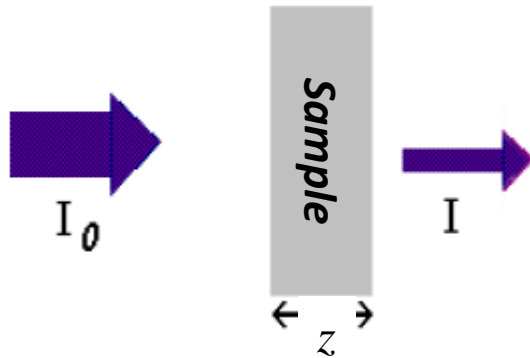
**Scattering from milk,  
ink, and water on an  
overhead projector**

**Transmission through  
milk, ink, and water  
projected onto a  
screen**



# Beer-Lambert Law

The Beer-Lambert law describes the attenuation of light as it passes through a medium.



$$\frac{I(z)}{I_0} = e^{-b_{ext}z}$$

$$b_{ext} = b_{scat} + b_{abs}$$

The extinction coefficient,  $b_{ext}$  is the sum of the scattering and absorption coefficients,  $b_{scat}$  and  $b_{abs}$ . All have units of  $(m^{-1})$ .

For milk  $b_{ext} \approx b_{scat}$ , and for ink  $b_{ext} \approx b_{abs}$ , and for water  $b_{ext} \approx 0$ .

Often single scattering albedo (SSA) is used as metric to indicate the importance of scattering versus absorption:

$$SSA = \frac{b_{scat}}{b_{ext}} = \frac{b_{scat}}{b_{scat} + b_{abs}}$$

# Quiz! Clouds and soot...

Based on their appearance what you estimate is the value of SSA and the spectral dependence of  $b_{\text{ext}}$  for

- a cloud



*SSA  $\approx 1$ , weak spectral dependence since color is white*

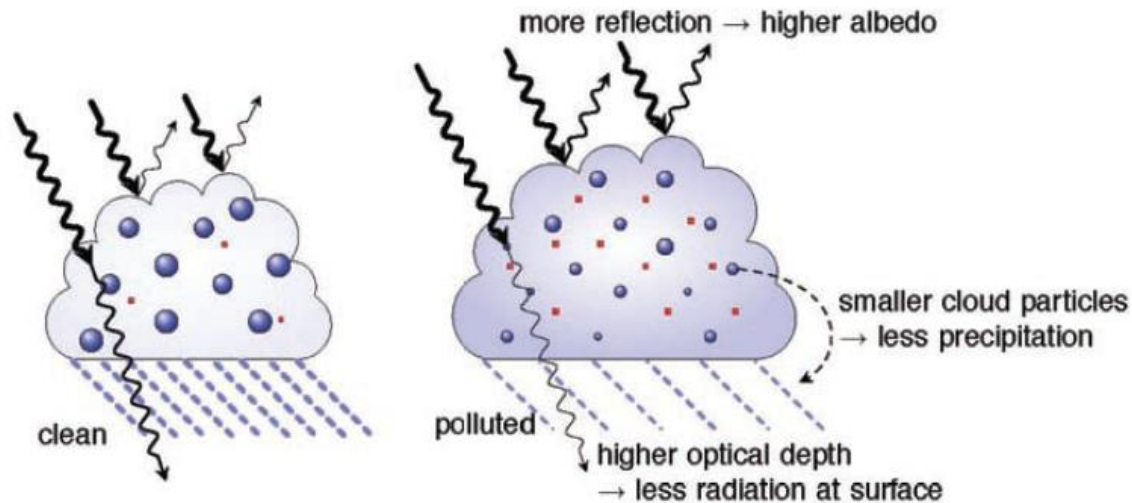
- diesel exhaust fumes

*Low SSA, weak spectral dependence since color is neutral*



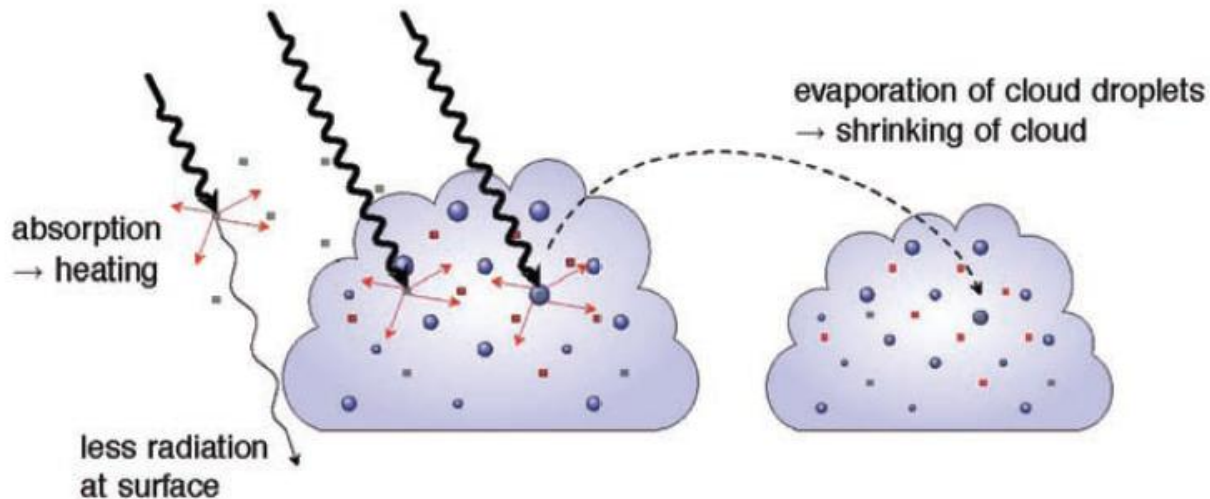
| Effect                     | Cloud Types Affected | Process   | Sign of Change in TOA Radiation | Potential Magnitude | Scientific Understanding |
|----------------------------|----------------------|---|---------------------------------|---------------------|--------------------------|
| Cloud albedo effect        | All clouds           | For the same cloud water or ice content more but smaller cloud particles reflect more solar radiation   | Negative                        | Medium              | Low                      |
| Cloud lifetime effect      | All clouds           | Smaller cloud particles decrease the precipitation efficiency thereby presumably prolonging cloud lifetime  | Negative                        | Medium              | Very low                 |
| Semi-direct effect         | All clouds           | Absorption of solar radiation by absorbing aerosols affects static stability and the surface energy budget, and may lead to an evaporation of cloud particles | Positive or negative            | Small               | Very low                 |
| Glaciation indirect effect | Mixed-phase clouds   | An increase in IN increases the precipitation efficiency  | Positive                        | Medium              | Very low                 |
| Thermodynamic effect       | Mixed-phase clouds   | Smaller cloud droplets delay freezing causing super-cooled clouds to extend to colder temperatures  | Positive or negative            | Medium              | Very low                 |

**Cloud albedo and lifetime effect (negative radiative effect for warm clouds at TOA; less precipitation and less solar radiation at the surface)**



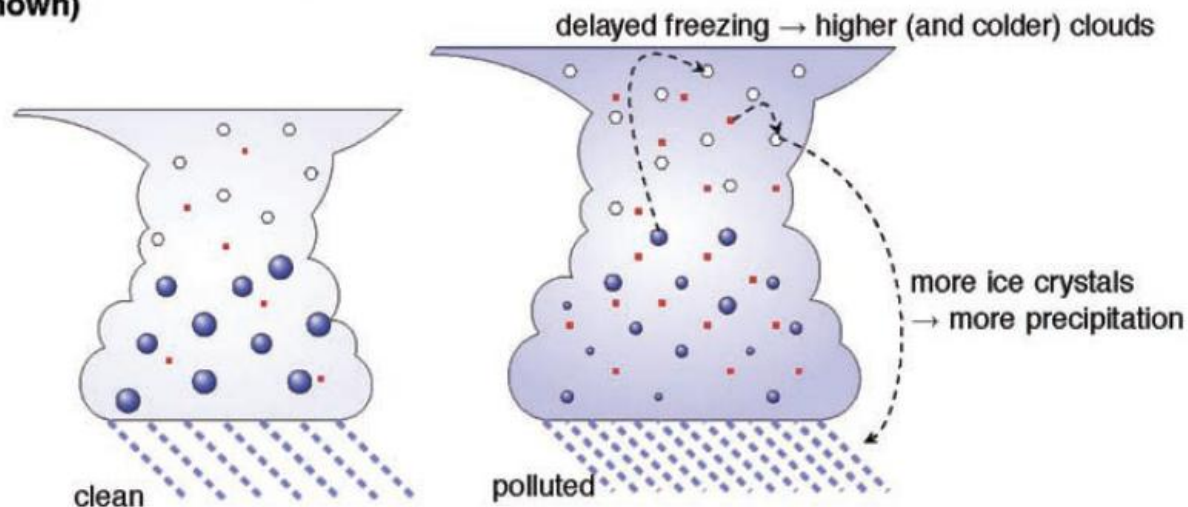
| Effect                     | Cloud Types Affected | Process   | Sign of Change in TOA Radiation | Potential Magnitude | Scientific Understanding |
|----------------------------|----------------------|---|---------------------------------|---------------------|--------------------------|
| Cloud albedo effect        | All clouds           | For the same cloud water or ice content more but smaller cloud particles reflect more solar radiation   | Negative                        | Medium              | Low                      |
| Cloud lifetime effect      | All clouds           | Smaller cloud particles decrease the precipitation efficiency thereby presumably prolonging cloud lifetime  | Negative                        | Medium              | Very low                 |
| Semi-direct effect         | All clouds           | Absorption of solar radiation by absorbing aerosols affects static stability and the surface energy budget, and may lead to an evaporation of cloud particles | Positive or negative            | Small               | Very low                 |
| Glaciation indirect effect | Mixed-phase clouds   | An increase in IN increases the precipitation efficiency  | Positive                        | Medium              | Very low                 |
| Thermodynamic effect       | Mixed-phase clouds   | Smaller cloud droplets delay freezing causing super-cooled clouds to extend to colder temperatures  | Positive or negative            | Medium              | Very low                 |

**Semi-direct effect (positive radiative effect at TOA for soot inside clouds, negative for soot above clouds)**

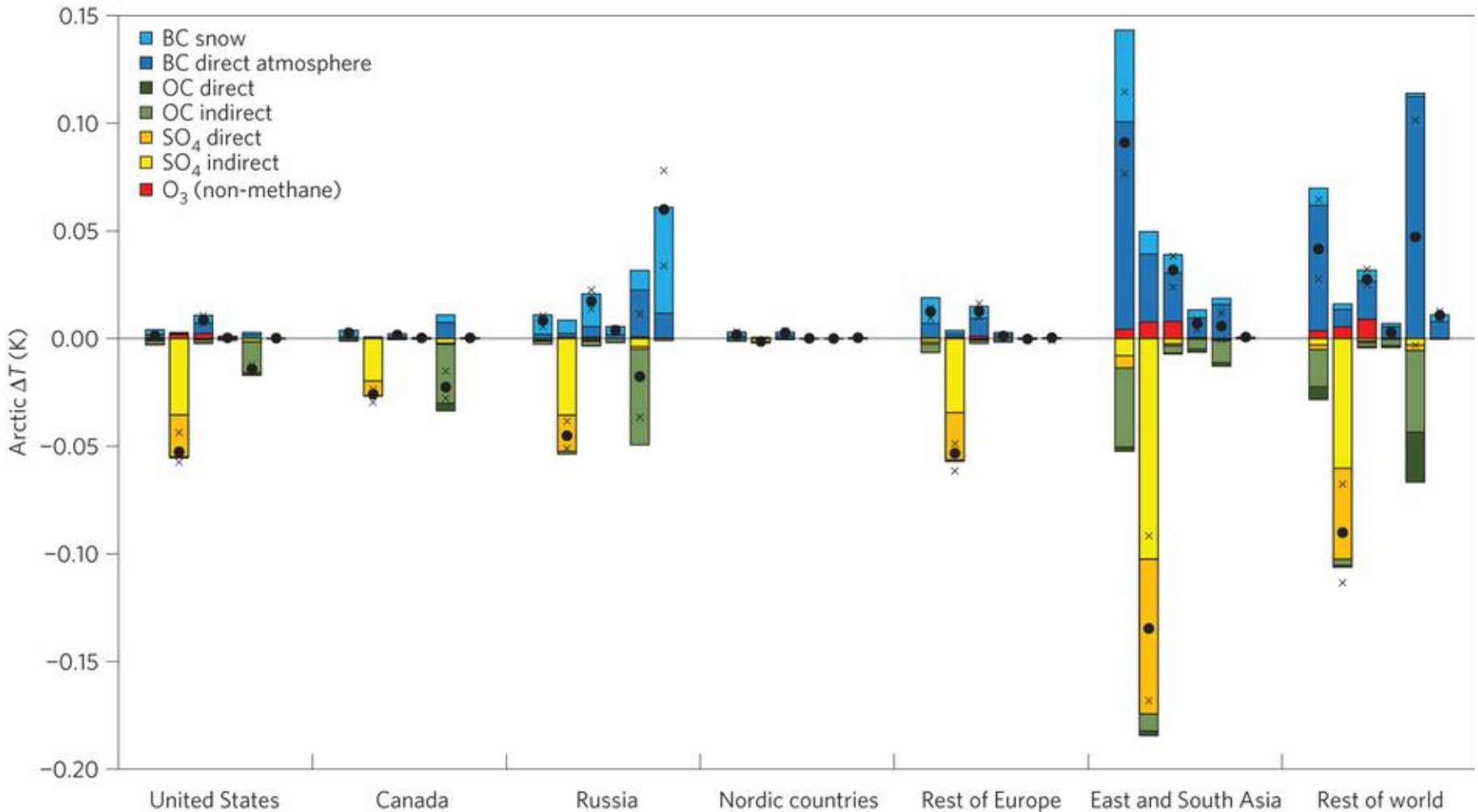


| Effect                     | Cloud Types Affected | Process   | Sign of Change in TOA Radiation | Potential Magnitude | Scientific Understanding |
|----------------------------|----------------------|---|---------------------------------|---------------------|--------------------------|
| Cloud albedo effect        | All clouds           | For the same cloud water or ice content more but smaller cloud particles reflect more solar radiation   | Negative                        | Medium              | Low                      |
| Cloud lifetime effect      | All clouds           | Smaller cloud particles decrease the precipitation efficiency thereby presumably prolonging cloud lifetime  | Negative                        | Medium              | Very low                 |
| Semi-direct effect         | All clouds           | Absorption of solar radiation by absorbing aerosols affects static stability and the surface energy budget, and may lead to an evaporation of cloud particles | Positive or negative            | Small               | Very low                 |
| Glaciation indirect effect | Mixed-phase clouds   | An increase in IN increases the precipitation efficiency  | Positive                        | Medium              | Very low                 |
| Thermodynamic effect       | Mixed-phase clouds   | Smaller cloud droplets delay freezing causing super-cooled clouds to extend to colder temperatures  | Positive or negative            | Medium              | Very low                 |

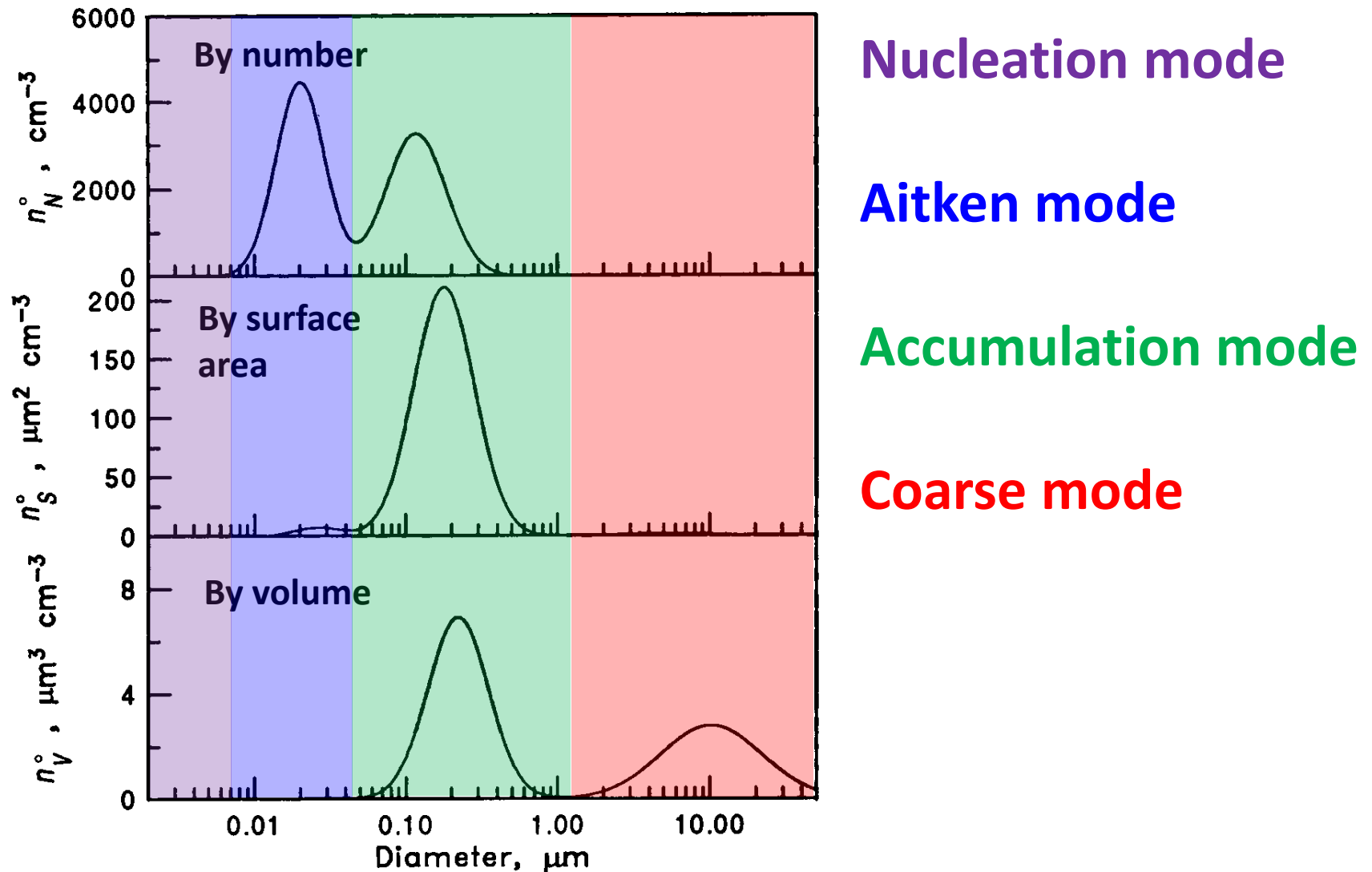
**Glaciation effect (positive radiative effect at TOA and more precipitation), thermodynamic effect (sign of radiative effect and change in precipitation not yet known)**



# Surface temperature response to aerosols



# Size distributions of particles



# Scanning Mobility Particle Sizer (SMPS)

The SMPS allows measurement of nucleation mode and Aitken mode particles

The instrument contains two devices:

- A differential mobility analyzer used to generate monodisperse aerosols
- A condensation particle counter for measuring the number concentration

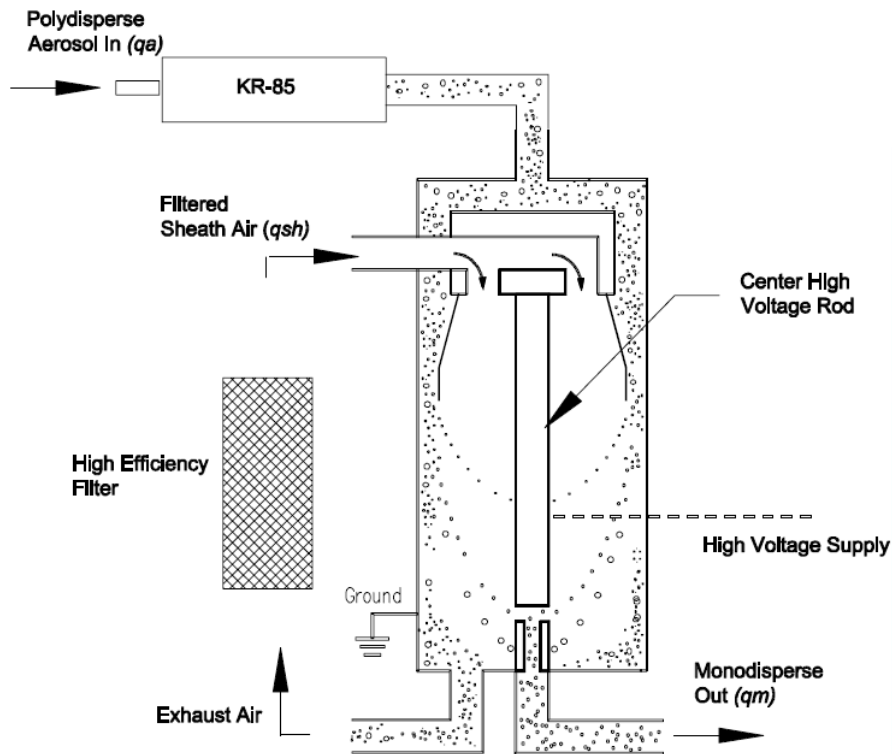
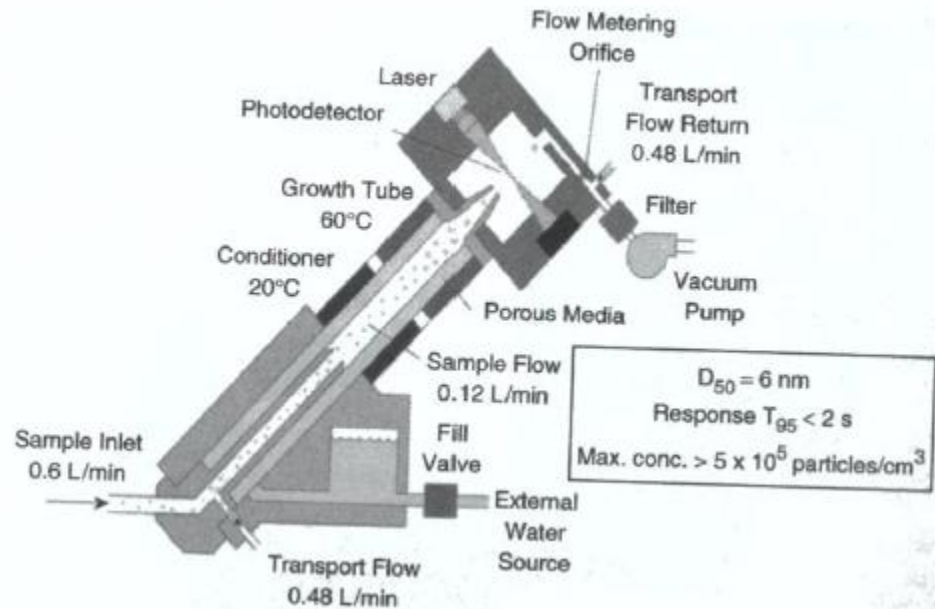


Figure B-1  
DMA Column Schematic



Differential Mobility Analyser (DMA)

Condensation Particle Counter (CPC)

# Scanning Mobility Particle Sizer (SMPS)

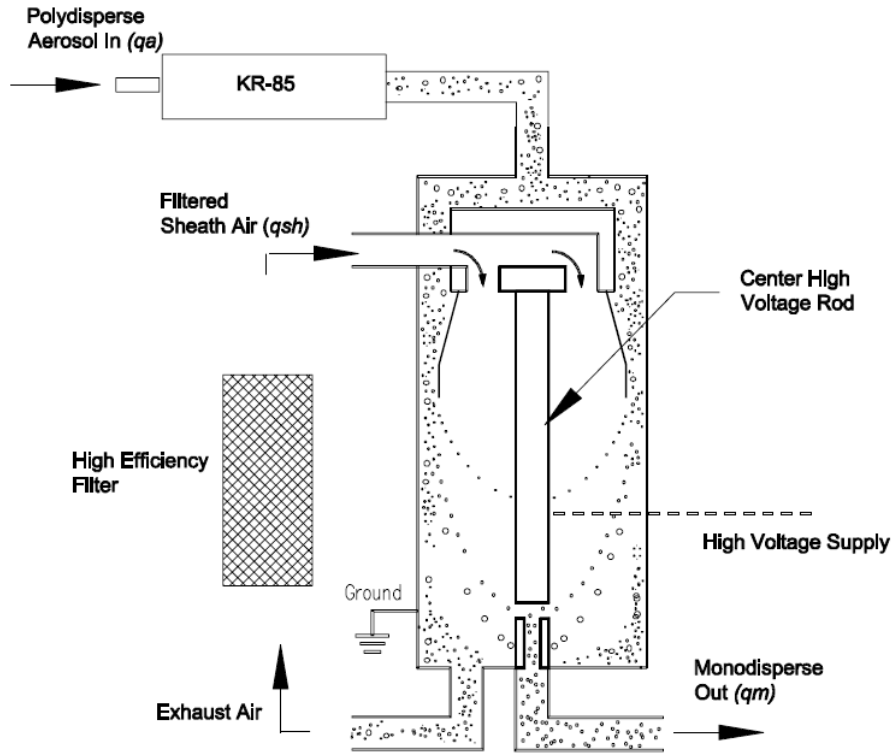


Figure B-1  
DMA Column Schematic

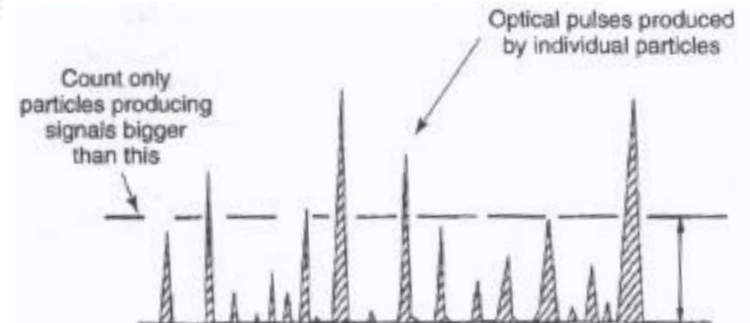
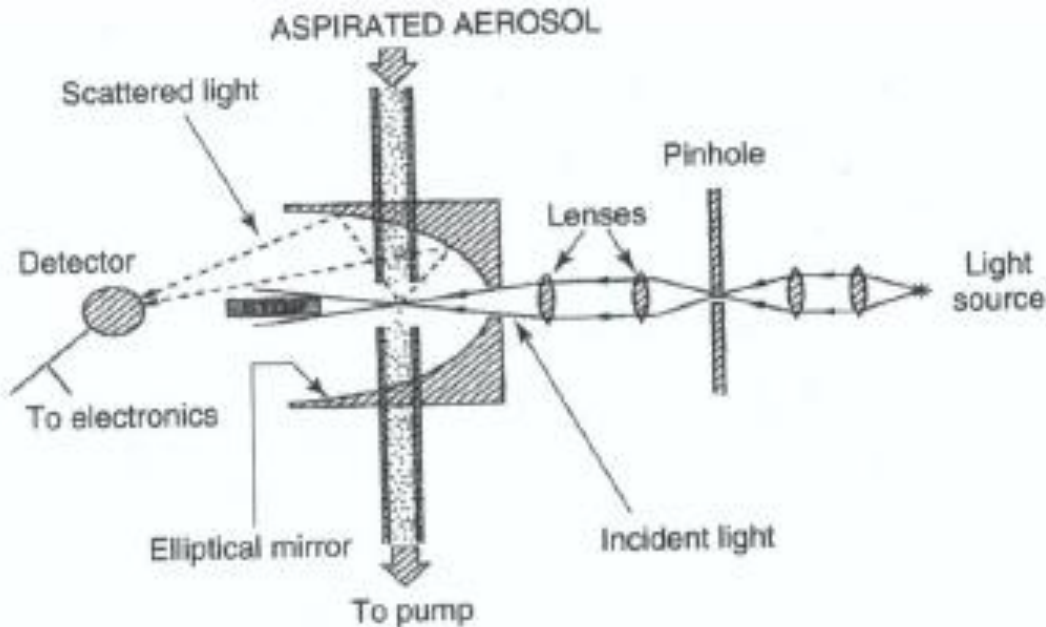
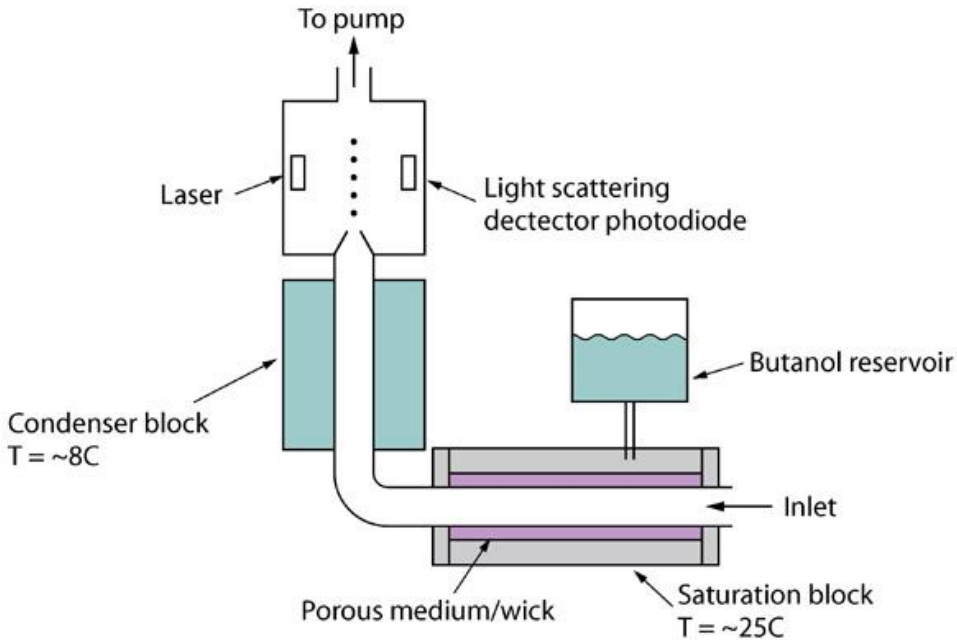
## Differential Mobility Analyzer

- Ambient polydisperse aerosol distribution
- Radiation source is used to give aerosols known charge distribution
- In the DMA column, particle-laden air passes along the column walls
- Sheath air flowing through the center of the column is particle free
- Electrostatic potential applied between center rod and column wall
- The trajectories of the particles are a function of particle size
- Selected diameter passes through the column exit port.

# Scanning Mobility Particle Sizer (SMPS)

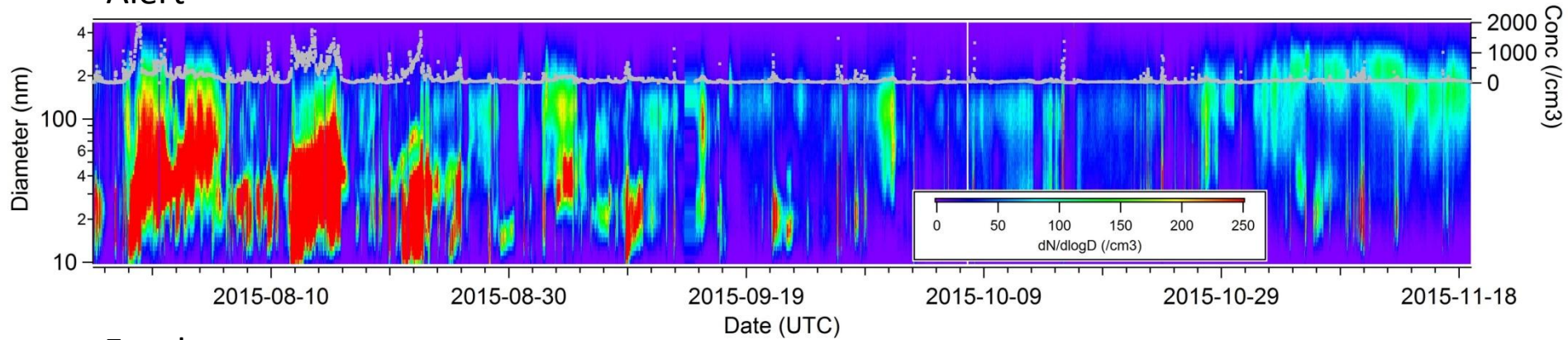
## Condensation Particle Counter

- In the saturation block, the air flow is saturated in butanol
- Particles then pass to the condenser block where the air is cooled and becomes supersaturated
- The aerosols can now serve as condensation nuclei
- Light scattering is then used to count the concentration of droplets

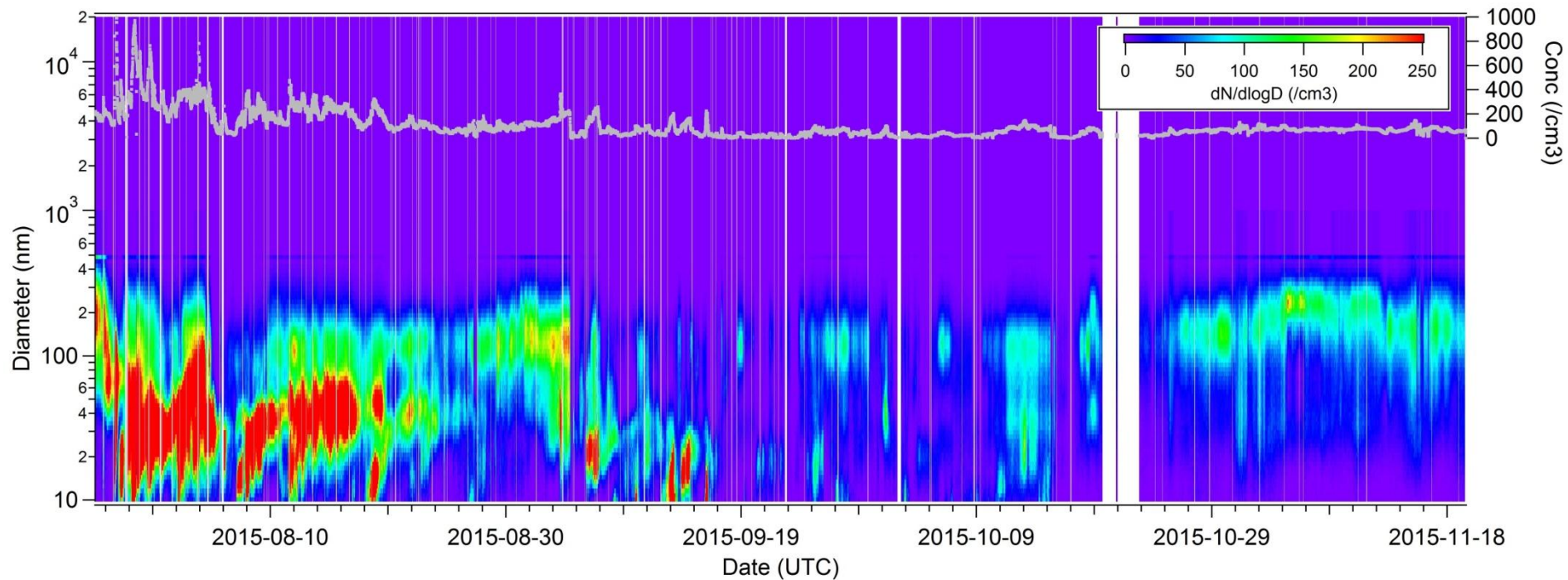


# Aerosol Size Distribution

Alert

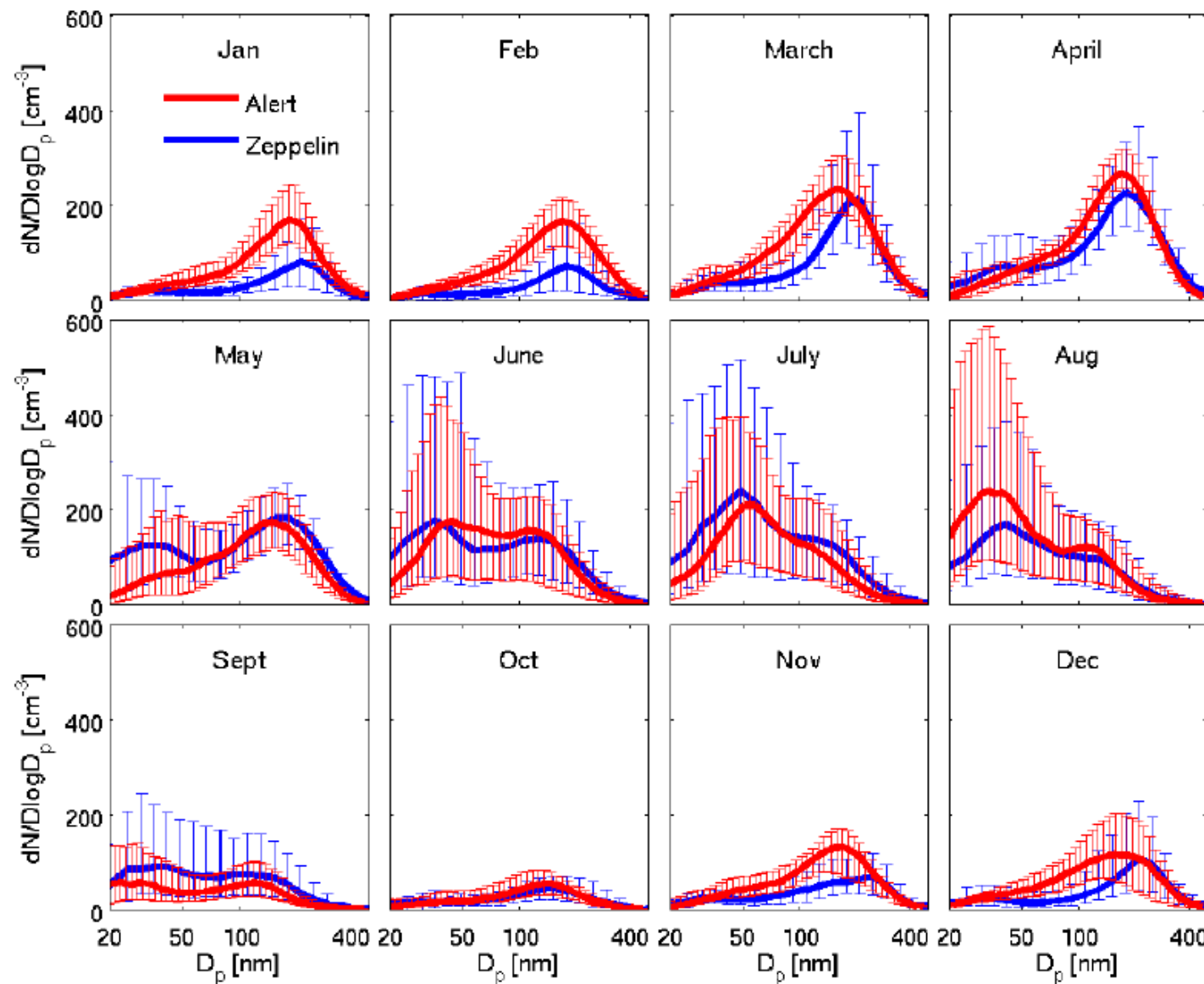


Eureka



**Smaller particles will tend to have greater indirect rather than direct forcing**

# Size distributions of Arctic aerosol

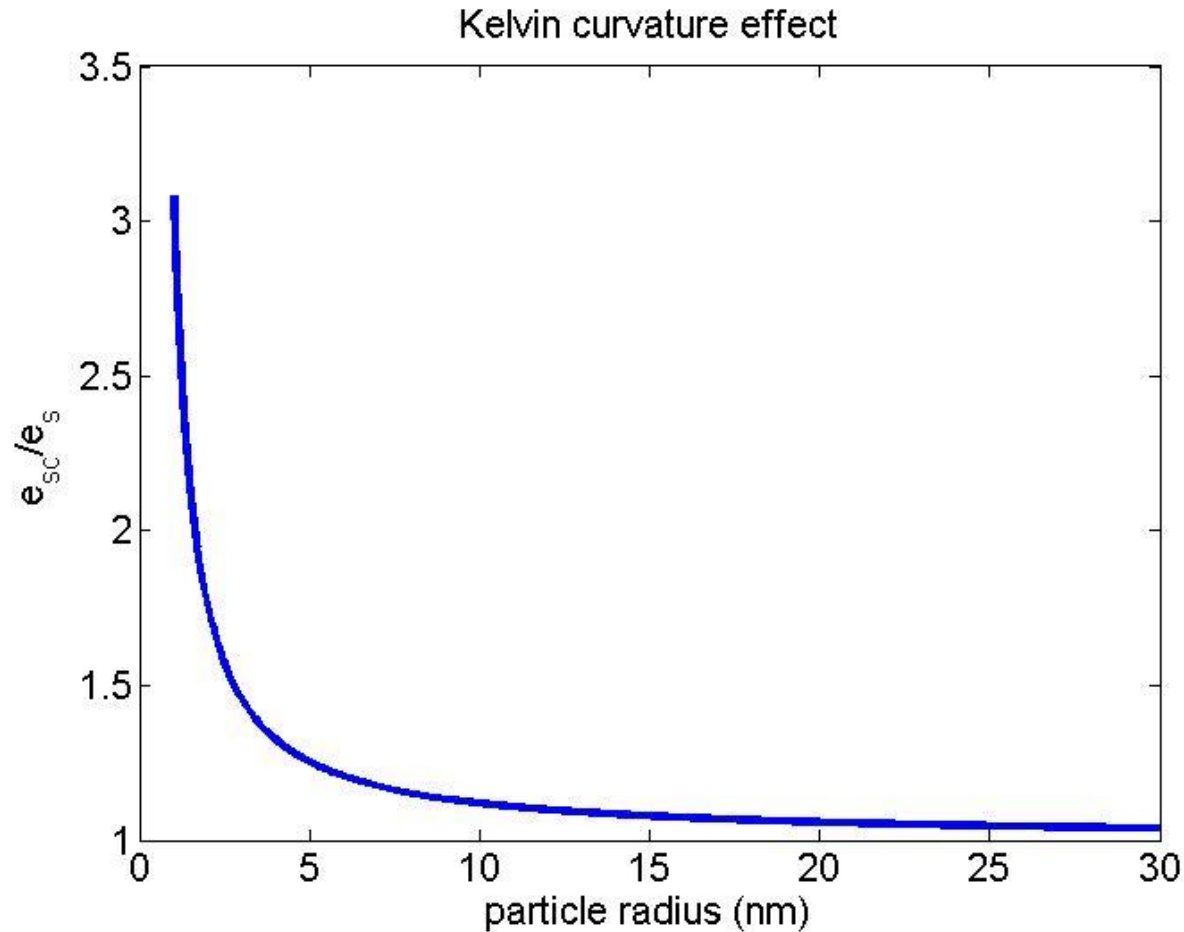


**Alert**  
**Zeppelin**  
2011 - 2013

# Cloud droplet nucleation by particles

- Process by which droplets (several microns in size) are formed from particles; also called heterogeneous nucleation
  - To what size will dry particles grow at a given atmospheric supersaturation?
  - Will the particles grow into large cloud droplets or will the particle diameters remain small (haze).
  - *Koehler theory is used to address these questions*

# Cloud Nucleation : Kelvin Effect

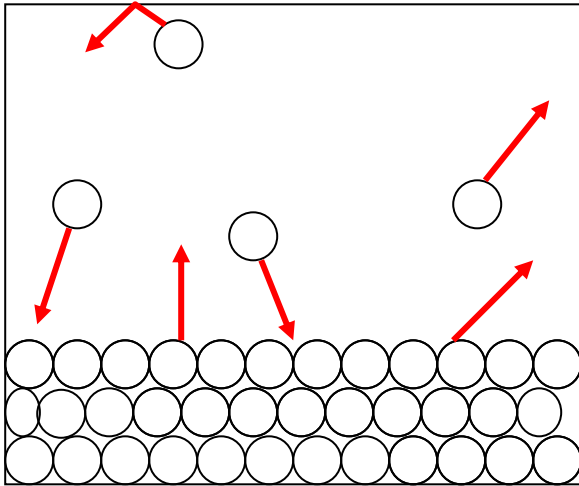


Rate of evaporation increases with curvature of droplet due to reduced H-bonding

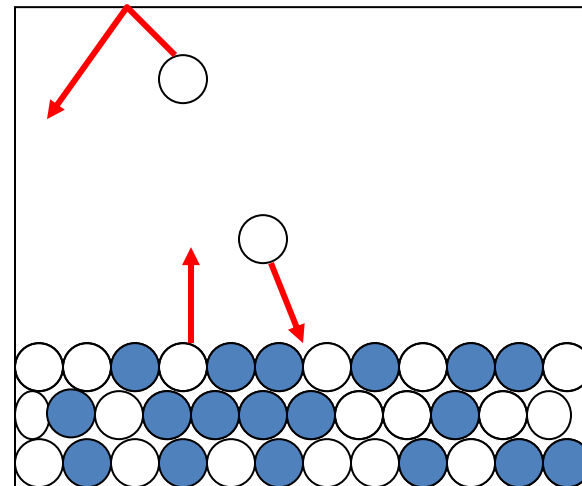
Very high saturation vapor pressures over small droplet compared to flat water surface

# Raoult's Law

$$P_{H_2O,SAT}^{\circ}$$



$$P_{H_2O,SAT} = x_{H_2O} P_{H_2O,SAT}^{\circ}$$

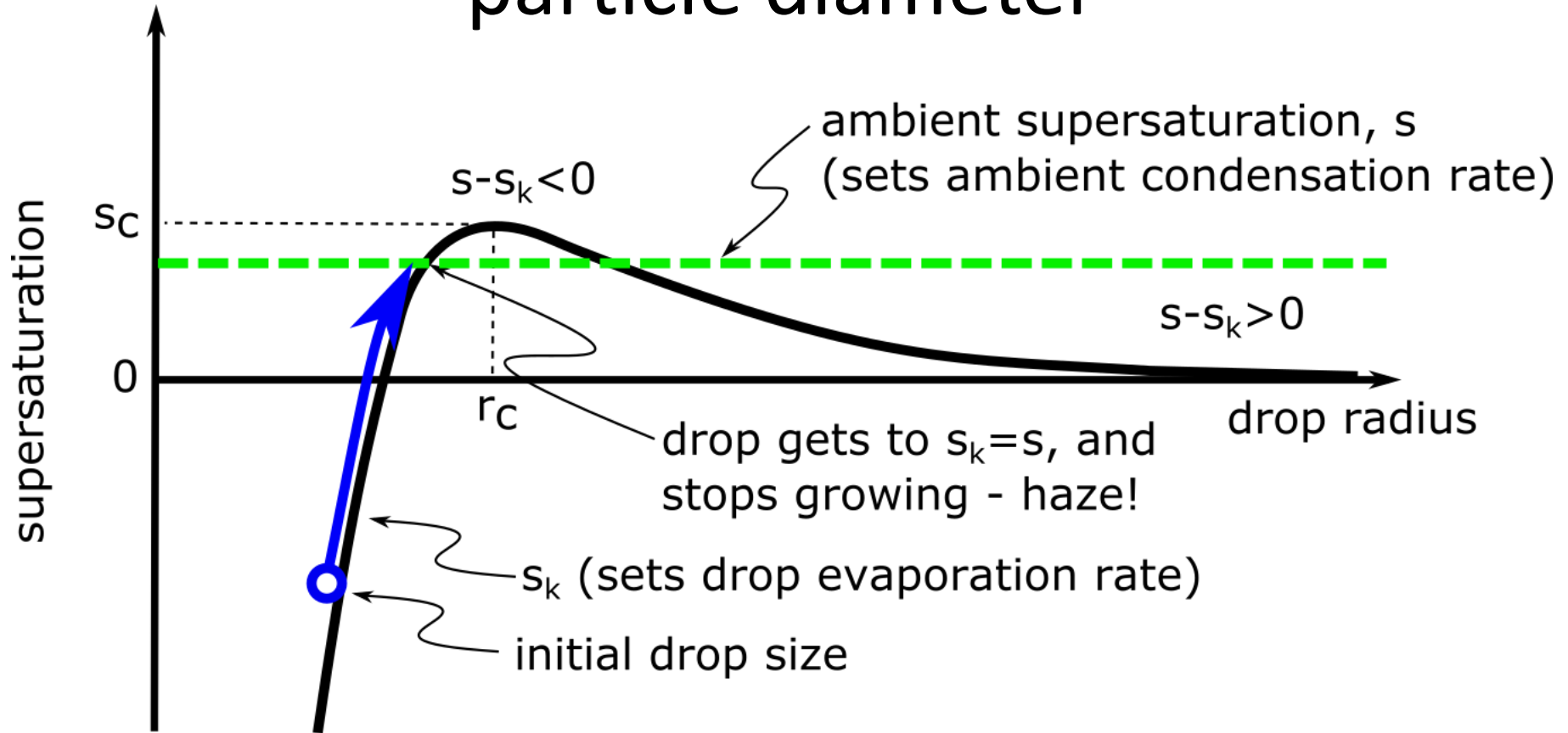


Solute  
molecules in  
blue

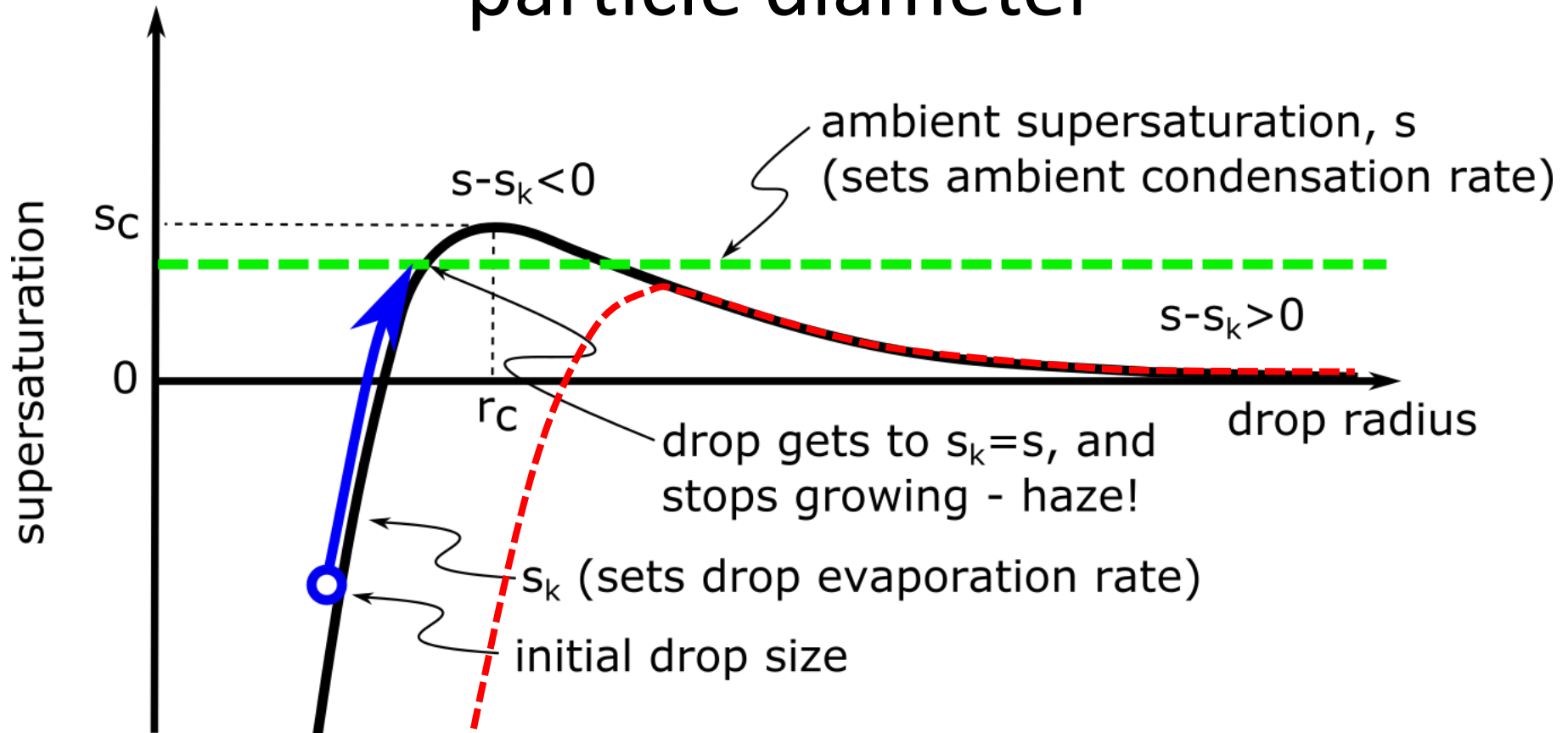
**The presence of dissolved species on the surface of water reduced the speed of evaporation**

- The saturation vapor pressure is proportional,  $P_{H_2O,SAT}$ , is the product of the molar fraction of water and the saturation vapor pressure of pure water,  $P_{H_2O,SAT}^{\circ}$

# Koehler Theory: Cloud nucleation and particle diameter

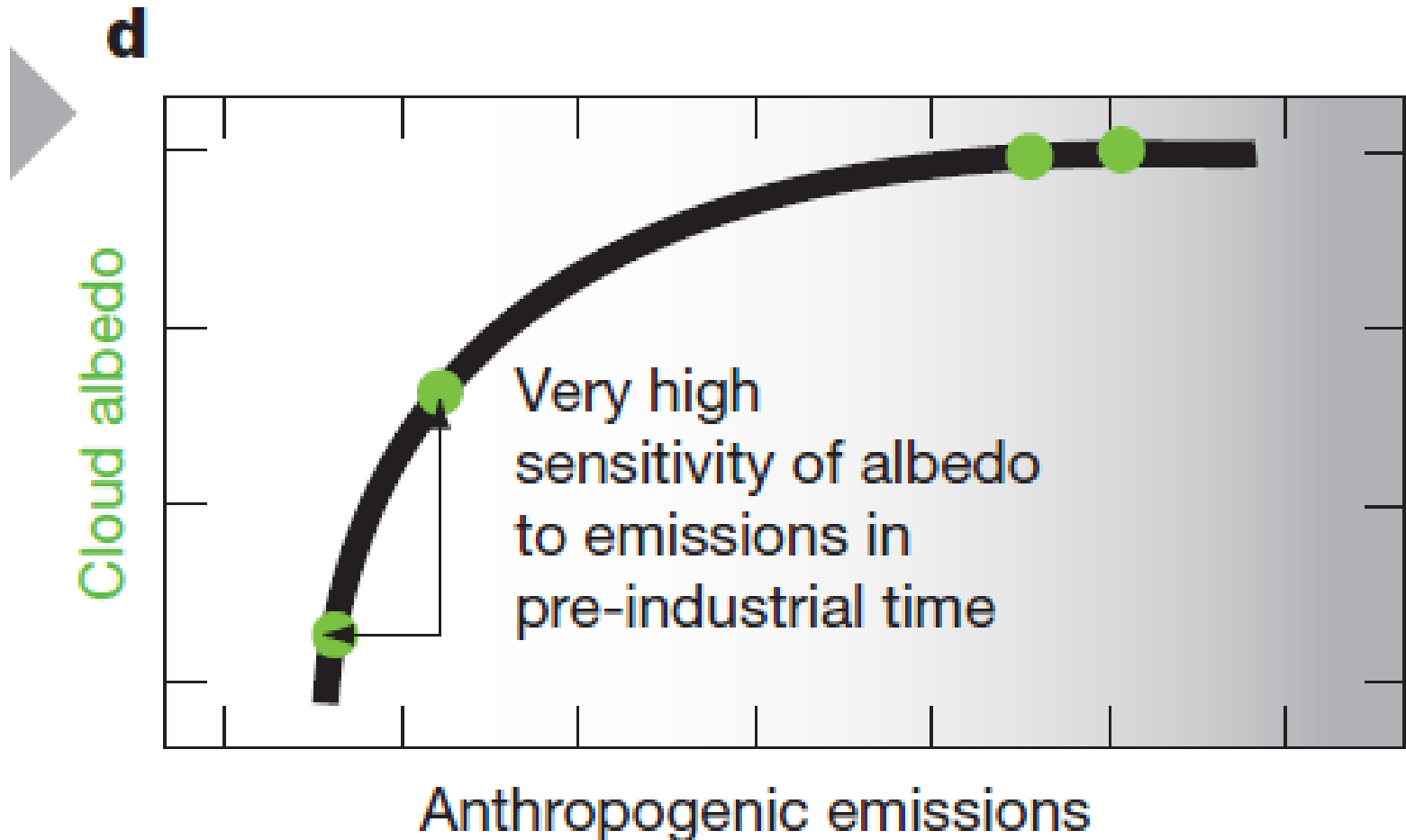


# Koehler Theory: Cloud nucleation and particle diameter



**Larger initial dry particle sizes will favor cloud nucleation**

# Arctic atmosphere sensitive to aerosol concentrations



Questions / Discussion